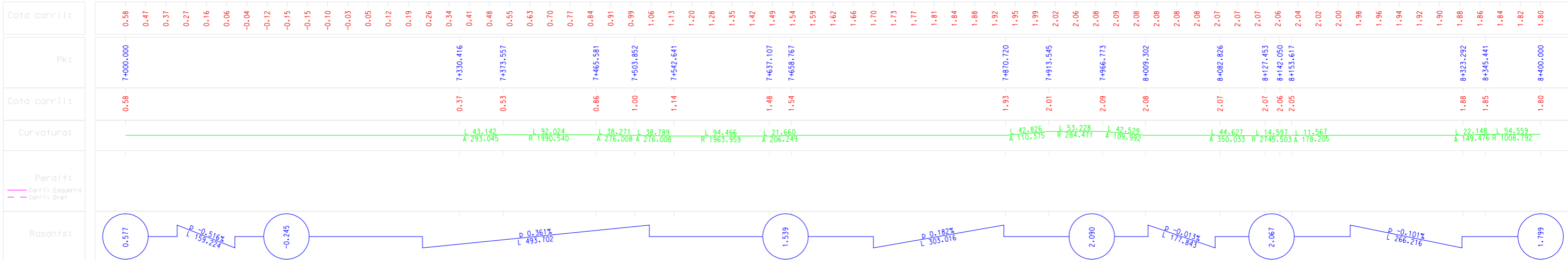
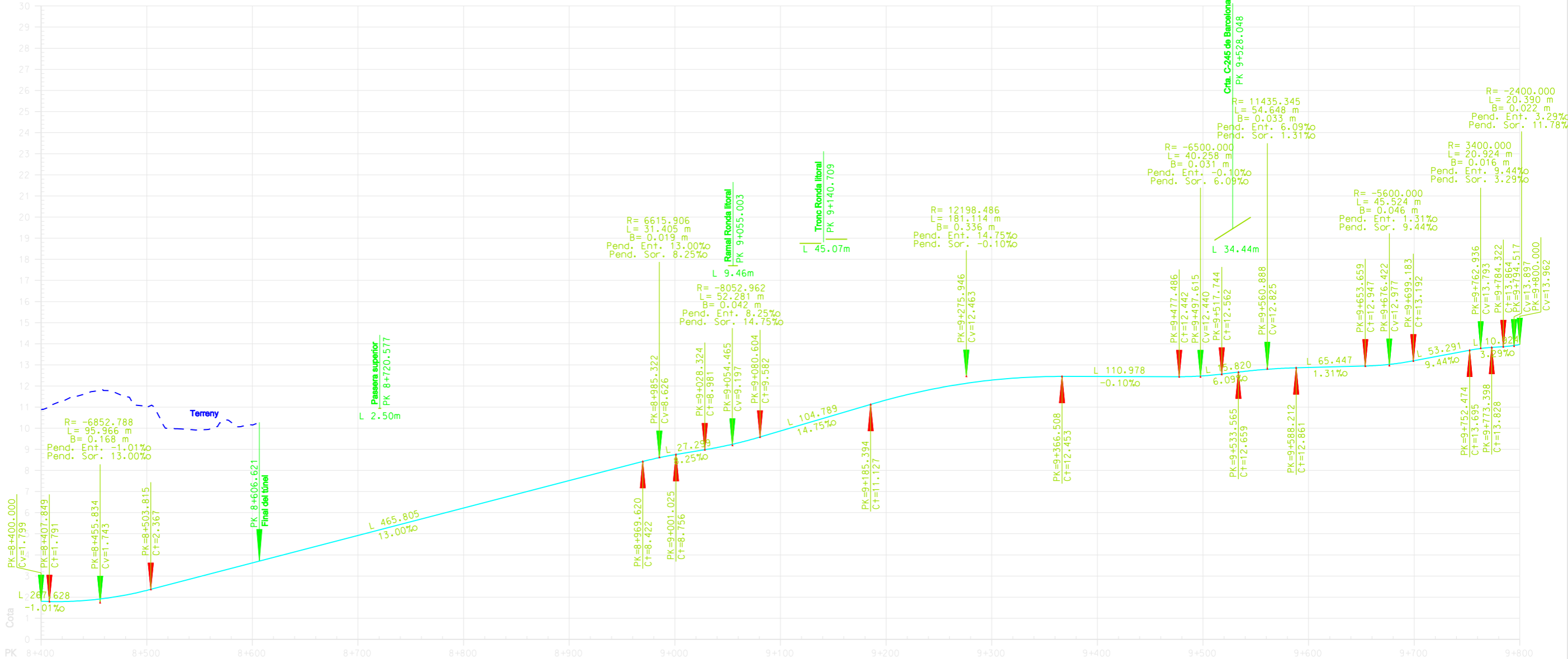


Cota carril:	0.08 0.13 0.19 0.24 0.29 0.34 0.38 0.41 0.44 0.46 0.47 0.48 0.48 0.49 0.49 0.50 0.50 0.51 0.51 0.52 0.52 0.53 0.53 0.54 0.54 0.55 0.55 0.56 0.56 0.57 0.57 0.58 0.58 0.59 0.59 0.60 0.60 0.61 0.61 0.62 0.62 0.63 0.63 0.64 0.64 0.65 0.65 0.66 0.66 0.67 0.67 0.68 0.68 0.69 0.72 0.76 0.80 0.85 0.89 0.91 0.92 0.93 0.94 0.93 0.92 0.92 0.91 0.89 0.85 0.78 0.68 0.58
Pk:	5+600.000 5+957.031 6+026.657 6+118.967 6+188.303 6+360.189 6+374.773 6+486.715 6+551.123 6+606.033 6+618.151 6+682.358 6+701.122 7+000.000
Cota carril:	0.08 0.51 0.53 0.55 0.57 0.62 0.62 0.65 0.67 0.68 0.68 0.76 0.80 0.58
Curvatura:	L 69.626 A 177.635 L 92.309 R 453.193 L 69.336 A 177.265 L 14.585 R 8305.584 L 64.408 R 6000.500 L 12.118 A 205.845 R 3496.601 L 18.764 A 256.142
Peralti:	Corral Esquerra Corral Dret
Rasants:	0.080 0.265% 0.456 0.026% 0.691 0.905 0.938 0.900 0.577





Cota carril:	1.80 1.79 1.83 1.94 2.10 2.32 2.58 2.84 3.10 3.36 3.62 3.88 4.14 4.40 4.66 4.92 5.18 5.44 5.70 5.96 6.22 6.48 6.74 7.00 7.26 7.52 7.78 8.04 8.30 8.55 8.75 8.91 9.09 9.30 9.57 9.87 10.16 10.46 10.75 11.05 11.33 11.59 11.81 12.00 12.16 12.28 12.37 12.43 12.45 12.45 12.45 12.45 12.44 12.44 12.48 12.58 12.70 12.79 12.85 12.88 12.90 12.93 12.96 13.04 13.20 13.39 13.58 13.76 13.85 13.97
Pk:	8+400.000 8+406.074 8+429.216 8+517.213 8+573.011 8+635.958 8+644.457 8+683.426 8+788.338 9+126.622 9+147.437 9+195.385 9+205.554 9+293.930 9+303.817 9+356.694 9+372.437 9+644.430 9+671.762 9+721.523 9+753.616 9+800.000
Cota carril:	1.80 1.79 1.80 2.54 3.27 4.08 4.20 4.70 6.07 10.26 10.57 11.27 11.41 12.24 12.30 12.45 12.45 12.93 13.00 13.40 13.71 13.97
Curvatura:	L 6.074 R 1008.792 L 23.142 A 152.791 L 55.798 A 168.388 L 110.415 R 508.166 L 104.913 A 230.896 L 20.815 A 129.419 L 47.948 R 804.661 L 10.169 A 90.451 L 9.887 A 89.385 L 52.877 R 811.755 L 15.743 A 115.046 L 27.332 A 76.504 L 49.761 R 214.139 L 32.093 A 82.900
Peralit:	Corril·l Esquerra Corril·l Dret
Rasants:	1.799 1.743 8.626 9.197 12.463 12.440 12.825 12.977 13.793 13.953



DIRECTOR DEL PROJECTE

ÀREA :  
Projectes d'instal·lacions Fixes

TÍTOL DEL PROJECTE

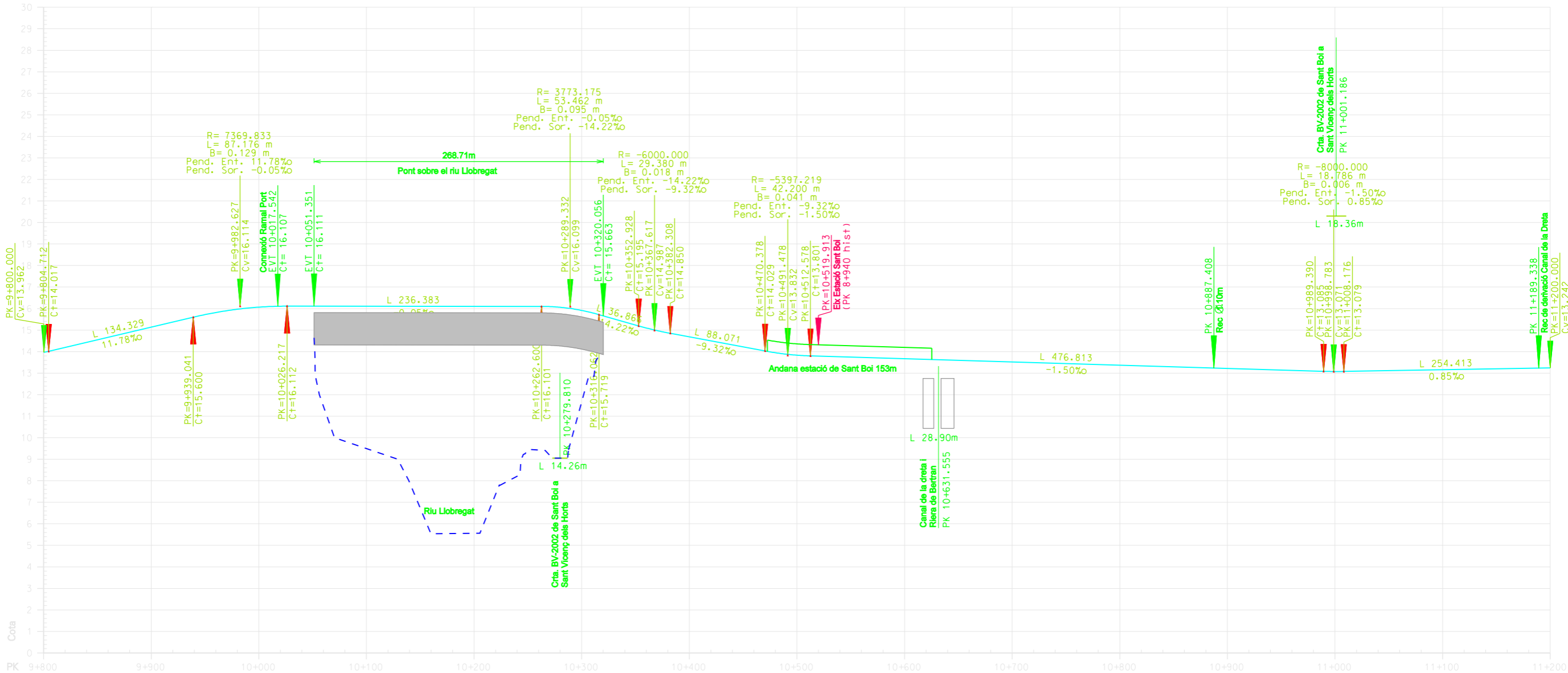
TRAÇAT LÍNIA DE CATALANS  
Tram: Plaça Espanya - Martorell Enllaç

NÚM. PROJECTE  
1.2.0700.016

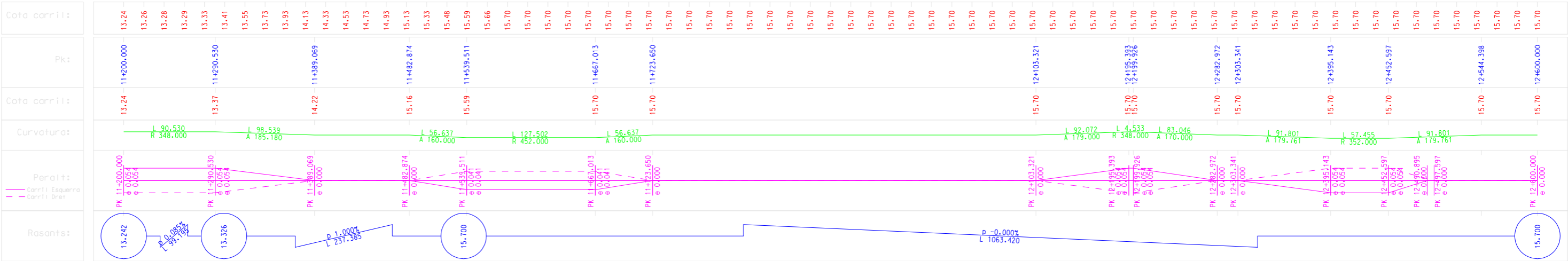
ESCALES  
H 1:4000  
V 1:200  
ORIGINALS  
GRÀFICS

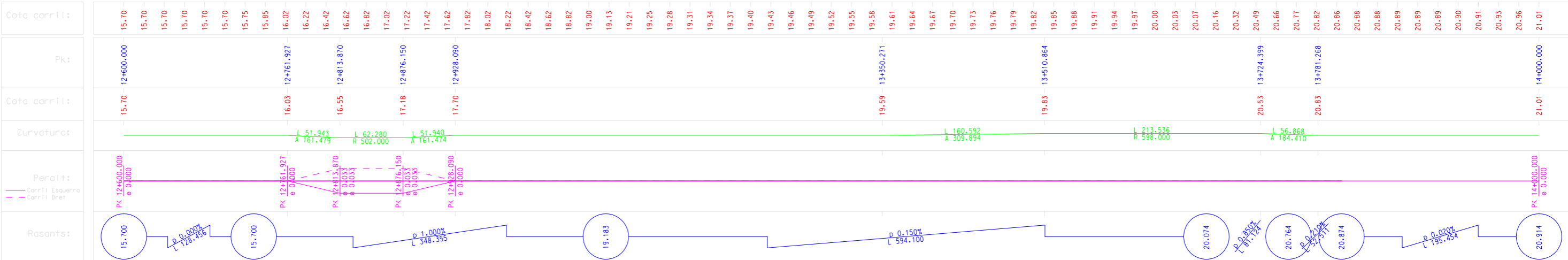
NOM DEL PLÀNOL  
PERFIL LONGITUDINAL:  
Tram Plaça Espanya - Martorell Enllaç

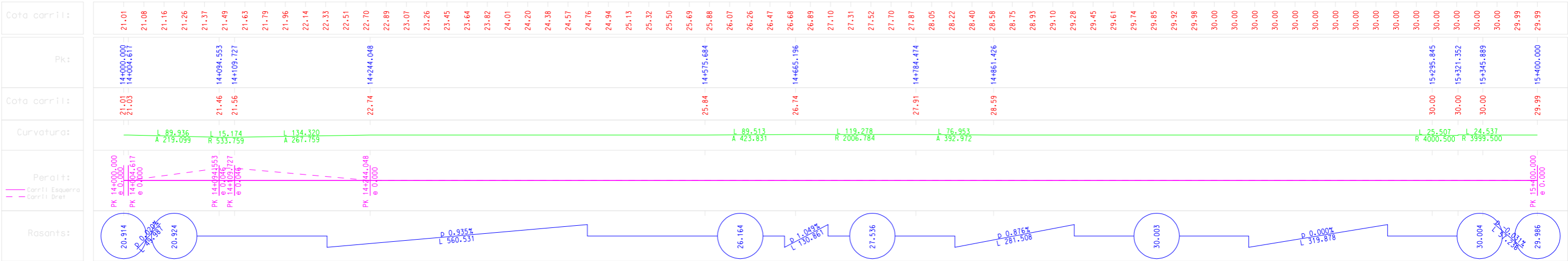
DATA  
JUNY 2000  
NOM FITXER  
LON\_PE-ME.DGN  
L PE-ME007.000  
PLÀNOL NÚM.  
29  
FULL 7 DE 22

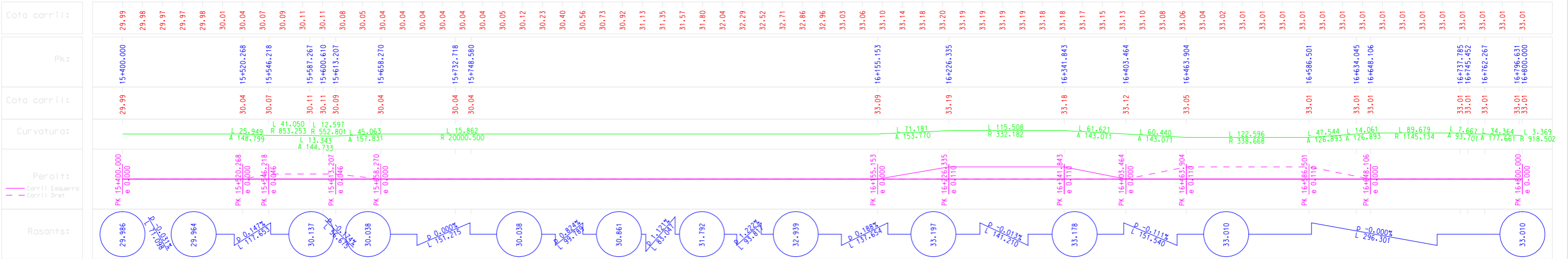


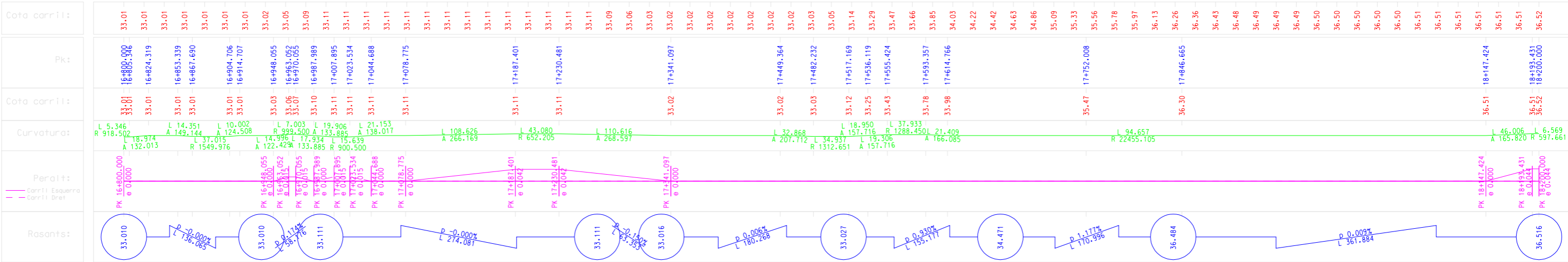
Cota carril:	13.97 14.20 14.43 14.67 14.90 15.14 15.38 15.61 15.82 15.97 16.07 16.11 16.11 16.11 16.11 16.10 16.10 16.10 16.10 16.06 15.91 15.66 15.38 15.10 14.87 14.68 14.50 14.31 14.13 13.95 13.83 13.79 13.76 13.73 13.70 13.67 13.64 13.61 13.58 13.55 13.52 13.49 13.46 13.43 13.40 13.37 13.34 13.31 13.28 13.25 13.22 13.19 13.16 13.13 13.10 13.08 13.09 13.11 13.12 13.14 13.16 13.17 13.19 13.21 13.23 13.24
Pk:	9+800.000 10+085.629 10+114.452 10+141.169 10+216.482 10+259.364 10+329.208 10+372.505 10+393.500 10+407.244 10+419.015 10+448.865 10+476.833 10+516.708 10+617.425 10+633.430 10+649.261 10+852.794 10+887.744 10+949.610 10+989.554 11+072.390 11+132.814 11+200.000
Cota carril:	13.97 16.11 16.11 16.11 16.10 16.10 15.53 14.95 14.75 14.62 14.51 14.23 13.97 13.79 13.64 13.62 13.60 13.29 13.24 13.15 13.09 13.13 13.19 13.24 13.24
Curvatura:	L 28.822 R 5000.500 L 26.717 R 4999.500 L 42.882 A 91.678 R 196.000 L 69.844 A 43.297 R 92.120 L 13.745 A 60.389 R 11.771 L 29.850 A 110.118 R 160.500 L 27.968 A 39.875 R 80.000 L 16.005 R 5000.000 L 15.831 R 4999.500 L 34.950 A 110.680 R 350.500 L 61.866 A 118.322 L 39.943 A 145.009 L 60.424 R 348.000 L 67.186
Peralit:	PK 10+989.554 e 0.000 PK 11+072.390 e 0.000 PK 11+132.814 e 0.054 PK 11+200.000 e 0.054
Rasants:	13.953 16.114 16.099 14.987 13.832 13.071 13.242

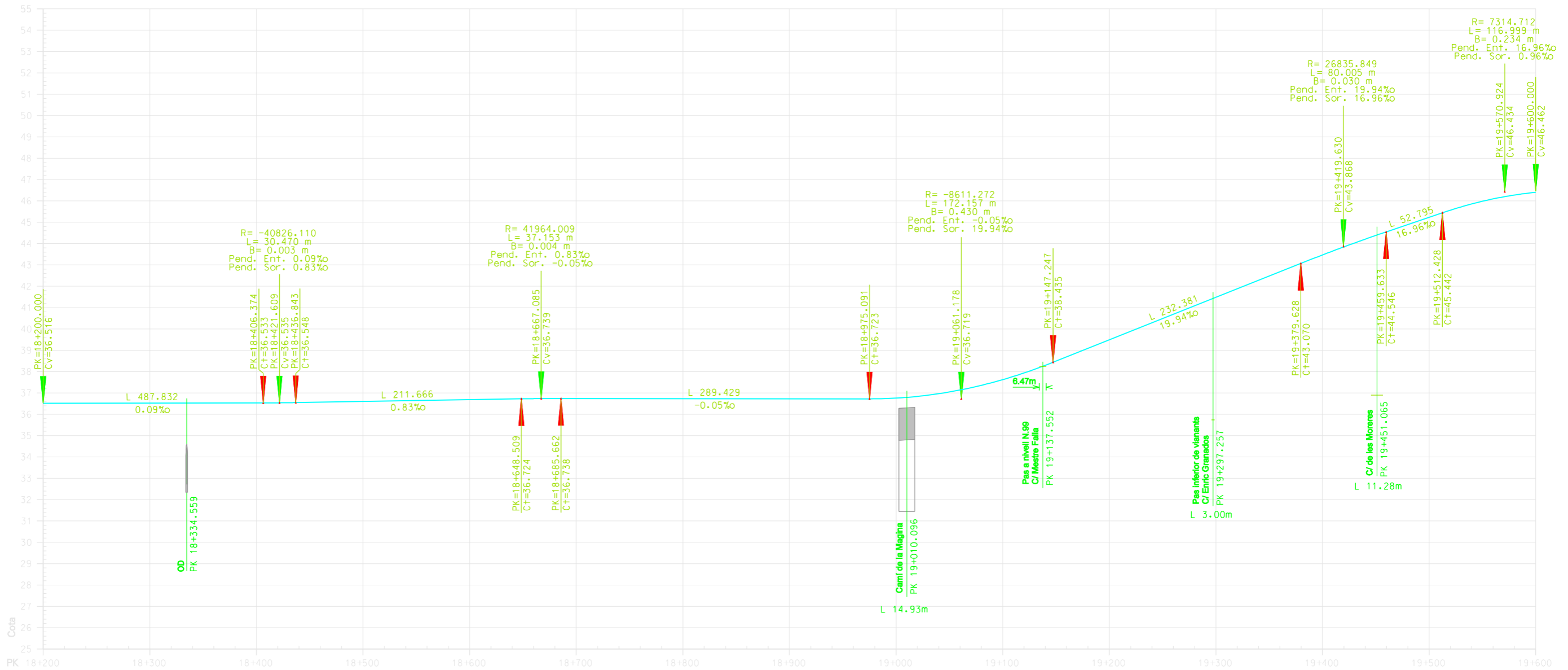












Cota carril:	36.52 36.52 36.52 36.52 36.52 36.53 36.53 36.53 36.53 36.54 36.55 36.57 36.58 36.60 36.62 36.63 36.65 36.67 36.68 36.70 36.72 36.73 36.74 36.74 36.74 36.74 36.73 36.73 36.73 36.73 36.73 36.73 36.72 36.72 36.76 36.84 36.96 37.14 37.36 37.62 37.94 38.29 38.69 39.09 39.49 39.89 40.29 40.68 41.08 41.48 41.88 42.28 42.68 43.08 43.47 43.84 44.21 44.55 44.89 45.23 45.57 45.86 46.09 46.28 46.40
Pk:	18+200.000 18+349.937 18+364.190 18+387.855 18+437.879 18+473.657 18+482.891 19+002.030 19+044.203 19+067.495 19+104.080 19+347.338 19+374.549 19+408.815 19+416.007 19+591.959 19+600.000
Cota carril:	36.52 36.53 36.53 36.53 36.55 36.74 36.74 36.76 37.00 37.21 37.68 42.43 42.97 43.64 43.77 46.36 46.40
Curvatura:	L 149.937 R 597.661 L 14.253 A 92.297 L 50.024 A 173.433 L 235.777 R 607.295 L 69.235 A 204.035 L 42.173 A 123.302 L 23.292 R 360.500 L 36.585 A 174.843 L 27.211 R 49999.500 L 7.192 R 16000.500 L 8.041 R 154.032
Peralt:	PK 18+200.000 e 0.004 PK 18+349.937 e 0.044 PK 18+364.190 e 0.044 PK 18+387.855 e 0.000 PK 18+437.879 e 0.044 PK 18+473.657 e 0.044 PK 18+482.891 e 0.000 PK 18+661.170 e 0.000
Rasants:	36.516 P 0.009% L 221.609 36.535 P 0.083% L 245.411 36.739 P -0.005% L 394.092 36.719 P 1.994% L 358.452 43.868 P 1.438% L 180.370 46.462



DIRECTOR DEL PROJECTE

ÀREA :  
Projectes d'instal·lacions Fixes

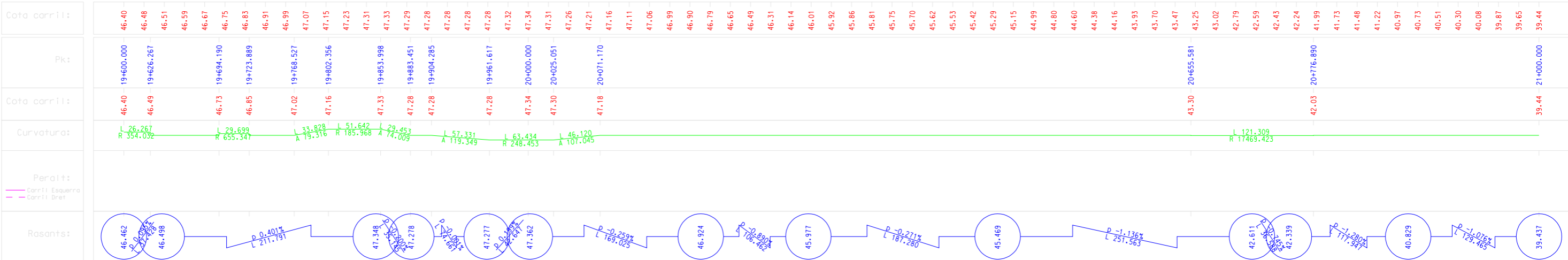
TÍTOL DEL PROJECTE  
TRAÇAT LÍNIA DE CATALANS  
Tram: Plaça Espanya - Martorell Enllaç

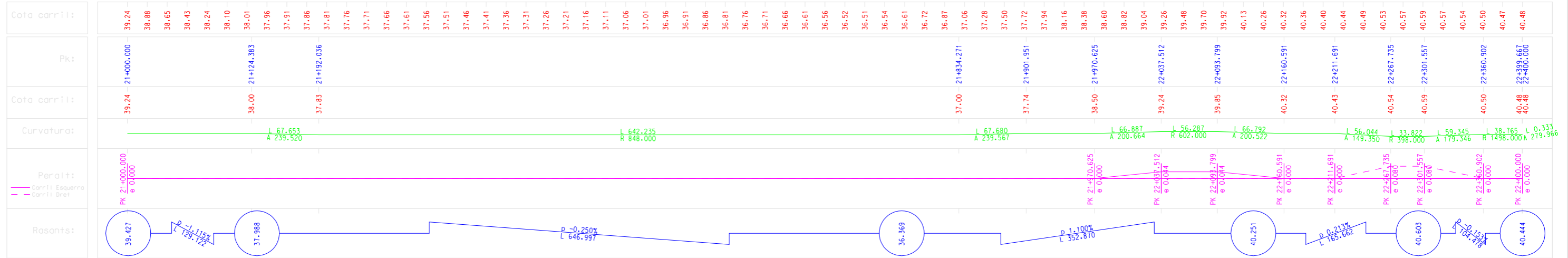
NÚM. PROJECTE  
1.2.0700.016

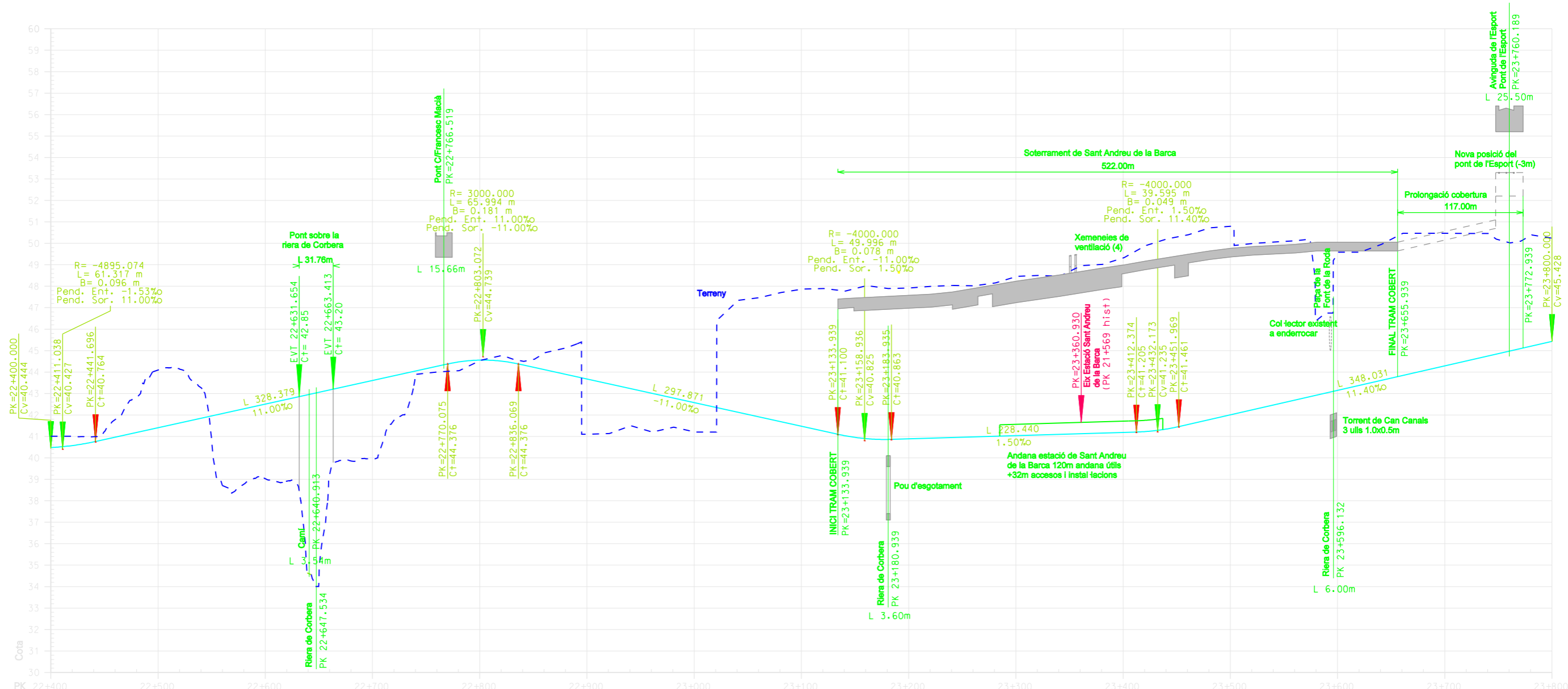
ESCALES  
H 1:4000  
V 1:200  
ORIGINALS  
GRÀFICS

NOM DEL PLÀNOL  
PERFIL LONGITUDINAL:  
Tram Plaça Espanya - Martorell Enllaç

DATA  
JUNY 2000  
NOM FITXER  
LON\_PE\_MED.DGN  
L PE\_MED14.000  
PLÀNOL NÚM.  
29  
FULL 14 DE 22







Cota carril:	40.48	40.57	40.75	40.97	41.19	41.41	41.63	41.85	42.07	42.29	42.51	42.73	42.95	43.17	43.39	43.61	43.83	44.05	44.27	44.47	44.56	44.51	44.33	44.11	43.89	43.67	43.45	43.23	43.01	42.79	42.57	42.35	42.13	41.91	41.69	41.47	41.25	41.04	40.90	40.86	40.89	40.92	40.95	40.98	41.01	41.04	41.07	41.10	41.13	41.16	41.19	41.22	41.34	41.55	41.78	42.01	42.24	42.46	42.69	42.92	43.15	43.38	43.60	43.83	44.06	44.29	44.52	44.74	44.97	45.20	45.43
Pk:	22+400.000		22+451.991		22+489.146		22+567.132		22+629.171							22+707.202		22+744.494			22+800.603					22+901.154				22+957.263			23+142.234			23+198.484		23+238.331			23+294.581				23+396.638		23+452.888		23+469.115			23+525.365				23+679.355		23+705.996		23+727.214		23+753.855		23+800.000							
Cota carril:	40.48		40.88		41.29		42.14		42.83							43.68		44.09			44.56					43.66				43.04			41.02			40.88		40.94			41.03			41.18		41.47		41.66			42.30				44.05		44.36		44.60		44.90		45.43								
Curvatura:	<div><div></div><div>L 51.991 A 279.966</div><div></div><div>L 77.987 A 165.684</div><div></div><div>R 62.039 352.000</div><div></div><div>L 78.030 A 165.731</div><div></div><div>L 56.109 A 149.437</div><div></div><div>R 100.550 398.000</div><div></div><div>L 56.109 A 149.437</div><div></div><div>L 56.250 A 150.000</div><div></div><div>R 39.847 400.000</div><div></div><div>L 56.250 A 150.000</div><div></div><div>L 56.250 A 150.000</div><div></div><div>R 16.227 400.000</div><div></div><div>L 56.250 A 150.000</div><div></div><div>L 26.641 A 199.710</div><div></div><div>R 21.218 1497.100</div><div></div><div>L 26.641 A 199.710</div><div></div></div>																																																																						
Peralt:	<div><div></div><div>PK 22+400.000 e 0.000</div><div></div><div>PK 22+489.146 e 0.000</div><div></div><div>PK 22+567.132 e 0.100</div><div></div><div>PK 22+629.171 e 0.100</div><div></div><div>PK 22+707.202 e 0.000</div><div></div><div>PK 22+744.494 e 0.000</div><div></div><div>PK 22+800.603 e 0.100</div><div></div><div>PK 22+901.154 e 0.100</div><div></div><div>PK 22+957.263 e 0.000</div><div></div><div>PK 23+142.234 e 0.000</div><div></div><div>PK 23+198.484 e 0.100</div><div></div><div>PK 23+238.331 e 0.100</div><div></div><div>PK 23+294.581 e 0.000</div><div></div><div>PK 23+396.638 e 0.000</div><div></div><div>PK 23+452.888 e 0.100</div><div></div><div>PK 23+469.115 e 0.100</div><div></div><div>PK 23+525.365 e 0.000</div><div></div></div>																																																																						
Rasants:	<div><div><div>40.444</div><div>P 0.153%</div><div>40.427</div></div><div></div><div><div>P 1.100%</div><div>L 392.033</div></div><div><div>44.739</div></div><div></div><div><div>P -1.100%</div><div>L 355.864</div></div><div><div>40.825</div></div><div></div><div><div>P 0.150%</div><div>L 273.236</div></div><div><div>41.235</div></div><div></div><div><div>P 1.140%</div><div>L 367.827</div></div><div><div>45.428</div></div></div>																																																																						

